

## GRIZZLY VALLEY ATV CLUB

## TRAIL DIFFICULTY RATINGS

"Ratings are "maximum"; i.e. most of the trail may be a rating "1", but there may be a difficult obstacle somewhere on the trail that may increase the rating to "3".

1. **Easy;** suitable for brand-new riders. Generally wide open and fairly flat, with minimal off-camber sidehills, and the occasional cross-ditch.
2. **Moderately easy;** suitable for new riders who are looking to expand their skills. Some minor off-camber sections, hill-climbs, rocks, mud, and other obstacles.
3. **Moderate;** suitable for riders with experience. Some off-camber sections, hill climbs, rocks, mud, water, and other obstacles. Some narrow or twisting areas requiring slow speeds, high shelf roads, trees, etc.
4. **Moderately difficult;** suitable for experienced riders who are looking for a bit of a challenge. May contain off-camber sidehills, rock climbing, narrow, twisting trails through the trees, steep sections, water crossings, deep mud, and plenty of the usual obstacles.
5. **Difficult;** suitable for very experienced riders only. Tough, technical trails, dirt-bike trails, tight squeezes, tires in the air, and lots of obstacles such as large rocks, bottomless mud, or deep water.



The club accepts no responsibility for the accuracy of the data published. This information and data are provided for reference only, not for precise navigation. Using the information provided indicates that you accept full responsibility for any and all damages (monetary, legal, or otherwise) and/or injury you may cause or incur as a result of the use of this information. As a user of this information, you agree to check the information against other sources to ensure that you do not follow a trail onto private land or into a restricted, prohibited, or environmentally sensitive area.

*Wide open spaces*

*Mountain trails*

*Memories for a lifetime*

## Mountain Goat Canyon



**Distance :** 12 km one way

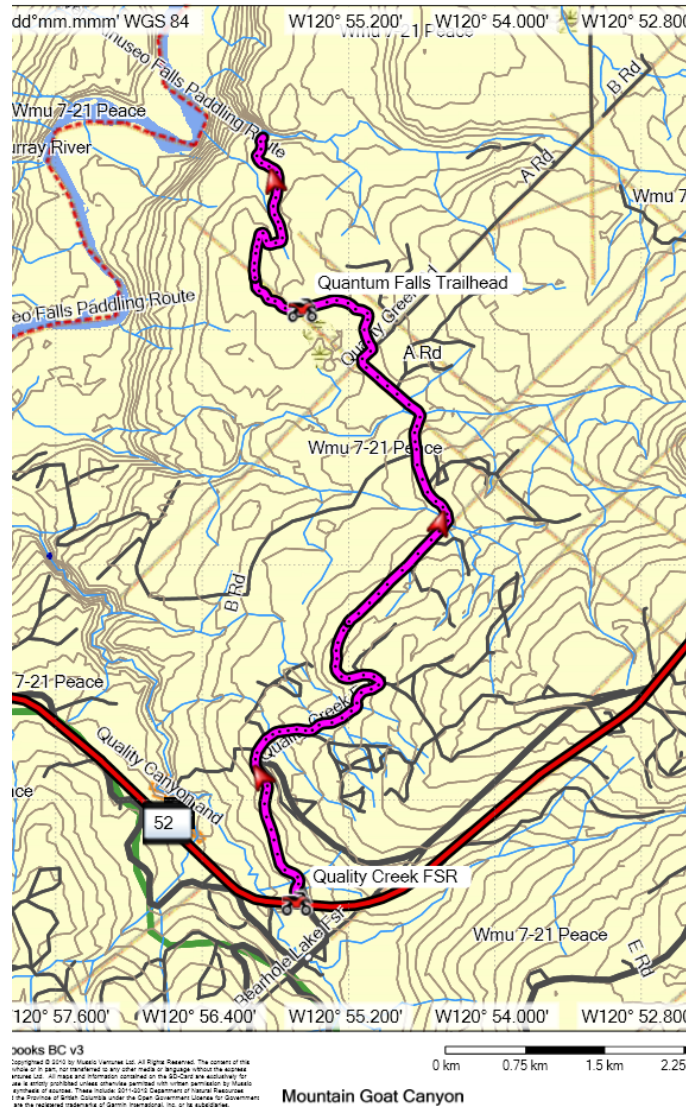
**Difficulty:** 2 - Moderately Easy

# Mountain Goat Canyon

This riding area is fairly close to Tumbler Ridge, and has recently been extended by logging operations. Access from the trail leads to a spectacular waterfall and canyon in a tributary of the Murray River. The cliffs that line this canyon are made up of the 93 million year old rocks of the Kaskapau Formation. Mountain goats are often seen.



*Quantum Falls*



## DIRECTIONS:

The signposted trailhead, at the beginning of the Quality Creek Forest Service Road, is approximately 11 km on Hwy 52 from the Co-Op bulk station. Another option is to follow the ATV trail from Tumbler Ridge, alongside Hwy #52 towards Dawson Creek, and then turn onto the Quality Creek Forest Service Road. Approximately 7 km along the route the signed trail goes off to the left on a recent logging road. After a short distance the trail leaves the logging road. Continuing on, following the signs, leads to an old cut block close to the lip of the canyon.

Enjoy a lunch over a small fire and keep watch on the far side of the canyon where the mountain goats are usually found. The adventurous can hike down steep ridges through the forest to get into the canyon below.

For those approaching from Dawson Creek the Quality Creek Forest Service Road is approximately 90 km south on Highway 52.

## GRIZZLY VALLEY ATV CLUB

For further trail information or questions:

Phone: 250-242-7353

E-mail: [tim.croston@ceslp.ca](mailto:tim.croston@ceslp.ca)